

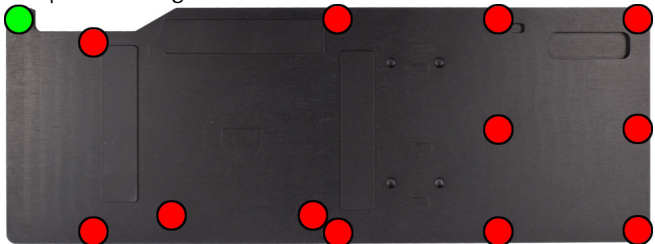
Description

Thank you for purchasing a graphics card back plate manufactured by Aqua Computer. The back plate for GTX TITAN X has been specifically designed for graphics cards according to reference design of the chip manufacturer. The back plate stabilizes the graphics card mechanically and ensures optimum heat dissipation for the RAM modules on the back side of the graphics card and the voltage regulator area. Please note that this back plate has been specifically designed for use with a water block of the kryographics series!

Installation

Step 1:

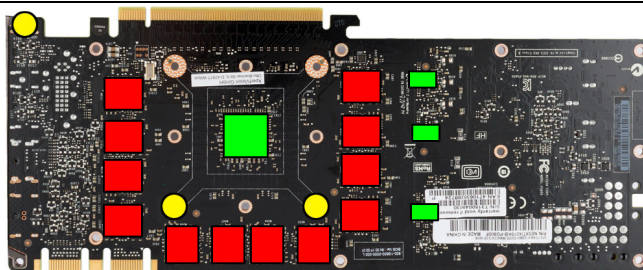
Place the graphics card with installed water block onto a flat surface with the back side of the graphics card facing upwards. The card should not rest on the slot bracket but only on the water block. Place the back plate onto a flat surface as well with the engraving of the plate facing downwards.



Place one black plastic spacer supplied with the back plate into each of the 13 recesses of the back plate. Use a spacer with 2 mm height for the position marked green in the figure and spacers with 3 mm height for the positions marked red in the figure.

Step 2:

Remove all screws from the back side of the graphics card except those marked yellow in the figure. Clean the surfaces of all RAM modules on the back side of the graphics card using benzine if necessary.



Apply a thin layer of thermal compound to the RAM modules on the back side, marked red in the figure. The thermal compound must not be electrically conductive!

Place pieces of the thermally conductive pads supplied with the back plate onto the areas marked green in the figure.

Step 3:

Turn the back plate upside down and place it onto the graphics card. Make sure that none of the plastic spacers dislodge from the back plate.

Attach back plate and graphics card to the water block. To do so, use the following mounting material depending on the colored markings in the figure:



Red marking: seven screws M3 x 10 mm.

Violet marking: two screws M3 x 8 mm.

Green marking: four screw M3 x 6 mm.

Step 4:

Unscrew the three screws fastening the black connection terminal to the water block and remove the terminal. Take the two gaskets mounted between terminal and water block and place them into the corresponding grooves of the heat pipe terminal supplied with the back plate. Fasten the heat pipe terminal to the water block using the three screws from the original terminal.

Step 5:

Apply a thin layer of thermal compound to the heat pipe groove of the back plate (yellow marking in the figure).

Step 6:

Cautiously position the heat pipe into the corresponding groove of the back plate. Place the stainless steel cover supplied with the back plate on top of the heat pipe and fasten the plate using four screws M3 x 5 mm (marked blue in the figure).

Step 7:

Carefully check that the back plate as well as the water block has level contact to all relevant components of the graphics card. Do not power on the graphics card or the PC if either back plate or water block does not perfectly fit the graphics card! In this case, disassemble and repeat the mounting procedure. All screws must not be overly tightened! Attend to the instructions supplied with the water block as well!

ATTENTION:

Disregarding the instructions may lead to severe damages! Aqua Computer GmbH & Co. KG cannot be held liable for damages or injuries resulting from improper installation or use of the product!

Thank you again for choosing an aqua computer product.